

CHAMUNDA ENGINEERING WORKS



CHAMUNDA ENGINEERING WORKS

📍 Shed No.7, Parishram Industrial Estate,
Jantanagar, Ramol, Ahmedabad-382449, Gujarat, India.
☎ +91 90332 12195, +91 81281 57161 🌐 www.chamundaengworks.com
✉ chamundaengworks10@gmail.com, info@chamundaengworks.com



Quality
Create a Brand,
Service Create a
Future

Manufacturers of
Paver Blocks & Bricks
Machine Plant

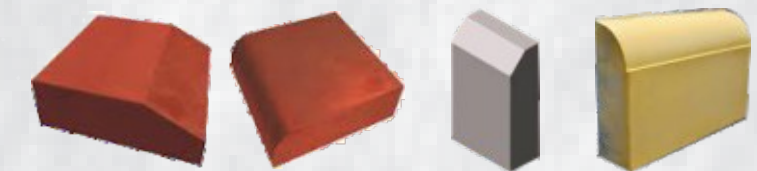


► **Automatic Flyash Bricks Making Machine**
Capacity - Heavy Hydraulic 4 Bricks Press
Pallet Size - 480 X 300 X 15 mm
Batch Size - 400 to 500 kg.
Production Capacity : 1400 to 1600 Bricks / Hour
No. of Bricks / Stroke : 4 Bricks / Stroke



► **Hydraulic Paver Block & Kerbstone Making Machine**

Capacity - 70 MT
7.5 MP. Motor with Panel



► **Pan Mixer Machine**

Capacity - 500 kg Per Batch
Heavy Duty Gear box
5 H.P. El. Motor



► **Pan Mixer Machine With Roller**

Capacity - 500 to 600 kg Per Batch
Heavy Duty Gear box
7.5 H.P. El. Motor





► **Paver Block Vibrator Machine**

2 HP 2800 RPM EI. Motor
App. Weight 500 kg



**Bricks & Hollow Block Manual Vibrator
Machine With EI. Motor**



Material Lifting Trolley

► **Concrete Mixer Machine**

Capacity - Full Bag - Mixing
5 H.P. EI. Motor



► **Colour Mixer Machine**

3ft Colour Drum
Double Bearing Scoop
3 H.P EI. Motor



**Earth Compactor Machine
With EI. Motor**



**Ball mill Drum Colour Mixer Machine
With EI. Motor**

PVC MOULDS FOR PAVER BLOCKS



PVC MOULDS FOR PAVER BLOCKS

PVC MOULDS FOR PAVER BLOCKS



Cosmic CEW - 107

100 sqft = 195 pcs
Height : 30/60/80mm
Textures : 2T / Stone



Roman I CEW - 108

100 sqft = 224 pcs
Height : 40/60/80mm
Textures : Ant / Step / Nails



Dambell CEW - 109

100 sqft = 262 pcs
Height : 25/30/40/50/60mm
Textures : 2T Ant / 2T Sand



Zig Zag CEW - 101

100 sqft = 288/324/345 pcs
Height : 60/80/100mm
Textures : Ant / Sand / Bubbles / Cloth / Step



Colorado CEW - 102

100 sqft = 224 pcs
Height : 40/60/80mm
Textures : Ant / Step / Nails



Damru CEW - 103

100 sqft = 256/262/308 pcs
Height : 35/60/80mm
Textures : Ant / Step / Nails / Fish / Sand



Square CEW - 110

100 sqft = 225 pcs
Height : 60mm
Textures : Ant / Sand / Rock / Grain / Circles



Brick CEW - 105

100 sqft = 450 pcs
Height : 50/60/80mm
Textures : Ant / Sand / Matt / Grain



Combo CEW - 112

100 sqft = 225 pcs
Height : 25 mm
Textures : Sanp



Brooks CEW - 104

100 sqft = 196 pcs
Height : 35/60/80mm
Textures : Ant / Fish



Taurus CEW - 105

100 sqft = 100/155 pcs
Height : 60/80mm
Textures : Ant / Fish / Nails



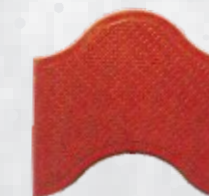
Interlock I CEW - 106

100 sqft = 208 pcs
Height : 60/80/100mm
Textures : Ant / Step



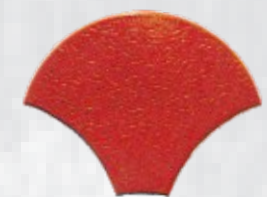
Big Brick CEW - 113

100 sqft = 320 pcs
Height : 60mm
Textures : Ant / Cloth / Capsule



Double D CEW - 114

100 sqft = 208 pcs
Height : 60 mm
Textures : New Ant



Shell CEW - 106

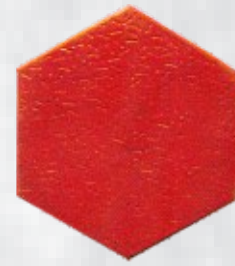
100 sqft = 198 pcs
Height : 60/80 mm
Textures : Ant

PVC MOULDS FOR PAVER BLOCKS



Chakra CEW - 116

100 sqft = 280 pcs
Height : 40/60 mm
Textures : Ant



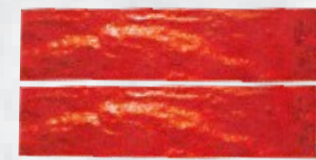
Hexagon CEW - 117

100 sqft = 220 pcs
Height : 40/60mm
Textures : Ant



Tigris CEW - 118

100 sqft = 260 pcs
Height : 60mm
Textures : Plain



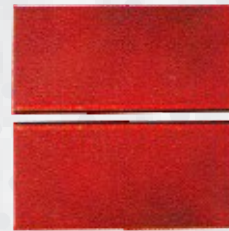
Rock Pavers CEW - 119

100 sqft = 640 pcs
Height : 60 mm
Textures : Rock



Anchor CEW - 120

100 sqft = 250 pcs
Height : 25/60mm
Textures : Plain Line



Double Brick CEW - 121

100 sqft = 450 pcs
Height : 60/80 mm
Textures : Sand



Rocket CEW - 122

100 sqft = 182 pcs
Height : 60mm
Textures : Plain



Double Trihex CEW - 123

100 sqft = 223 pcs
Height : 60 mm
Textures : Plain



Small I CEW - 124

100 sqft = 345 pcs
Height : 60/80 mm
Textures : Plain / Ant / Stone

PVC MOULDS FOR PAVER BLOCKS



Mini I CEW - 125

100 sqft = 360 pcs
Height : 60 mm
Textures : Plain



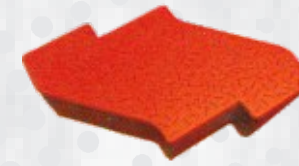
Matt Chakra CEW - 126

100 sqft = 240 pcs
Height : 60 mm
Textures : Matt



Tri Hex CEW - 127

100 sqft = 416 pcs
Height : 60/80mm
Textures : Plain



S Square CEW - 128

100 sqft = 310 pcs
Height : 60mm
Textures : Ant



Diva CEW - 129

100 sqft = 208 pcs
Height : 60 mm
Textures : Plain



Waves CEW - 130

100 sqft = 225 pcs
Height : 60 mm
Textures : Ant



Floor CEW - 131

100 sqft = 310 pcs
Height : 20 mm
Textures : Plain



Akash CEW - 132

100 sqft = 330 pcs
Height : 40/60 mm
Textures : Plain



Contour CEW - 133

100 sqft = 300 pcs
Height : 20 mm
Textures : Plain

PVC MOULDS FOR PAVER BLOCKS



Junior I CEW - 134

100 sqft = 380 pcs
Height : 80 mm
Textures : Matt



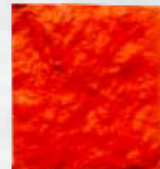
New Cosmic CEW - 135

100 sqft = 220 pcs
Height : 60 mm
Textures : 2T



Inter Locking Brick CEW - 136

100 sqft = 450 pcs
Height : 60/80/100mm
Textures : Plain



Cube 150 CEW - 137

100 sqft = 400 pcs
Height : 60/80 mm
Textures : Plain / Sand / Cobble



Cube 100 CEW - 138

100 sqft = 900 pcs
Height : 50/60/80 mm
Textures : Plain / Sand / Matt / Grain / Cobble



Rectangle CEW - 139

100 sqft = 225 pcs
Height : 20 mm
Textures : Plain



Cube 125 CEW - 140

100 sqft = 640 pcs
Height : 60 mm
Textures : Cloth



Self Interlock CEW - 141

100 sqft = 169 pcs
Height : 60 mm
Textures : Bubbles



Forward Cosmic CEW - 142

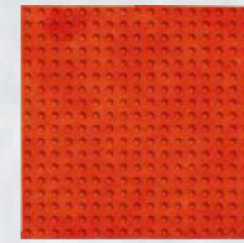
100 sqft = 202 pcs
Height : 60 mm
Textures : 2T

PVC MOULDS FOR CHEQUERED TILES

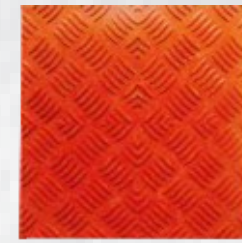
(300mm X 300mm X 25mm / 30mm / 40mm / 50mm / 60mm)



CT 01



CT 02



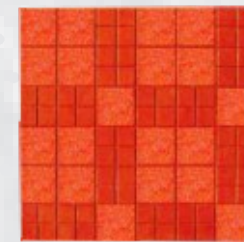
CT 03



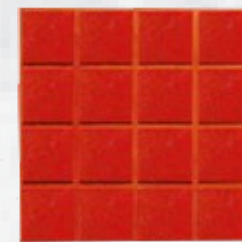
CT 04



CT 05



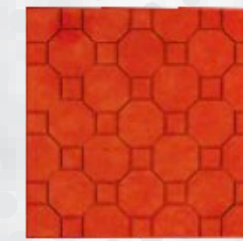
CT 06



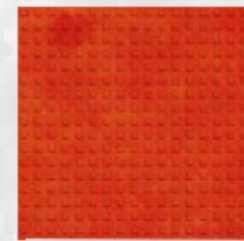
CT 07



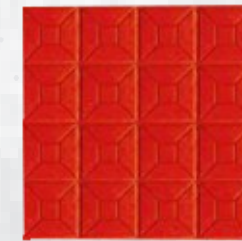
CT 08



CT 09



CT 10



CT 11



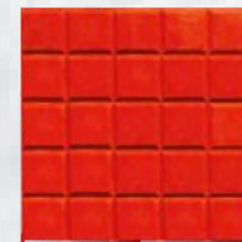
CT 12



CT 13



CT 14



CT 15



CT 16

PVC MOULDS FOR CHEQUERED TILES

(300mm X 300mm X 25mm / 30mm / 40mm / 50mm / 60mm)



CT 17



CT 18



CT 19



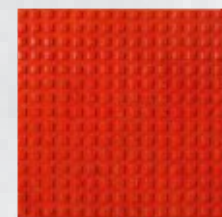
CT 20



CT 21



CT 22



CT 23



CT 24



CT 25



CT 26



CT 27



CT 28



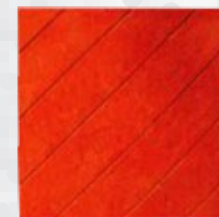
CT 29



CT 30



CT 31



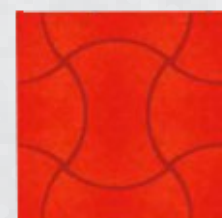
CT 32



CT 33



CT 34



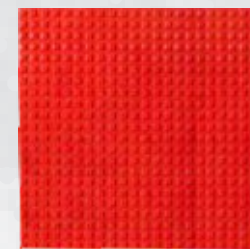
CT 35



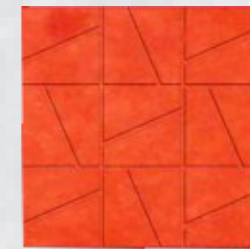
CT 36

PVC MOULDS FOR CHEQUERED TILES

(400mm X 400 mm X 30/60 mm)



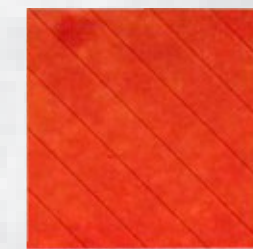
CT 201



CT 202



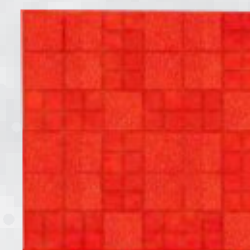
CT 203



CT 204



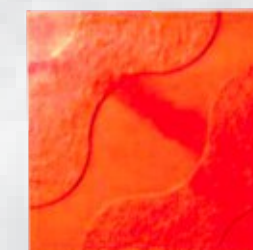
CT 205



CT 206



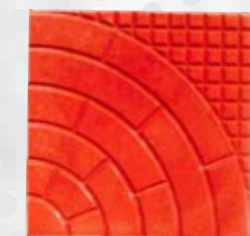
CT 207



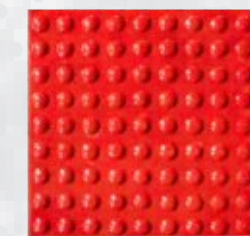
CT 208

PVC MOULDS FOR CHEQUERED TILES

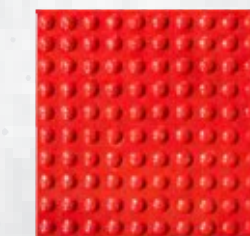
(250mm X 250 mm X 25/50 mm)



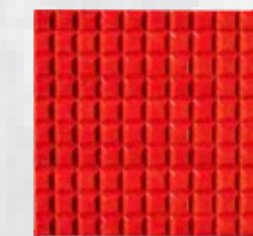
CT 301



CT 302



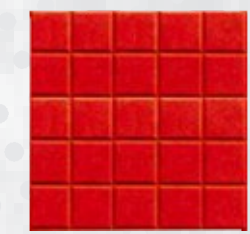
CT 303



CT 304



CT 305



CT 306



CT 307

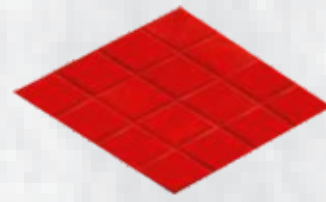


CT 308

PVC MOULDS FOR FLOOR TILES



SP 01



SP 02



SP 03



SP 04



MM 01



MM 02



MM 03



MM 04



MM 05

PVC MOULDS FOR WALL TILES



WT 01



WT 02



WT 03



WT 04



WT 05



WT 06



WT 07



WT 08

PVC MOULDS FOR STEP
(300mm X 300mm X 25mm)



ST 05



ST 06



ST 07

PVC MOULDS FOR RISER
(150mm X 300mm X 25mm)



SR 08

PVC MOULDS FOR KERB STONES

Available in Round / Chamfered

- (300 mm X 300 mm X 75/100 mm)
- (300 mm X 450 mm X 100/150 mm)
- (300 mm X 200 mm X 60/100 mm)
- (300 mm X 350 mm X 100 mm)
- (155 mm X 300 mm X 400 mm)
- (200 mm X 250 mm X 60 mm)
- (200 mm X 350 mm X 60 mm)
- (300 mm X 600 mm X 75/100 mm)



PVC MOULDS FOR FLEXI - PAVERS

(GRAIN FINISH)

- (300 mm X 200 mm X 60 mm)
- (200 mm X 200 mm X 60 mm)
- (100 mm X 200 mm X 60 mm)
- (100 mm X 100 mm X 60 mm)



PVC MOULDS FOR DRAINAGE

- (150 mm X 150 mm)
- (150 mm X 250 mm)



PVC MOULDS FOR GRASS PAVERS

- (300 mm X 300 mm X 60mm)



PVC MOULDS FOR DRAIN COVER

- (300 mm X 600 mm X 60mm)

